



---

# Trade and Business Statistics

---

Geert Bruinooge

Consultant

United Nations Statistics Division

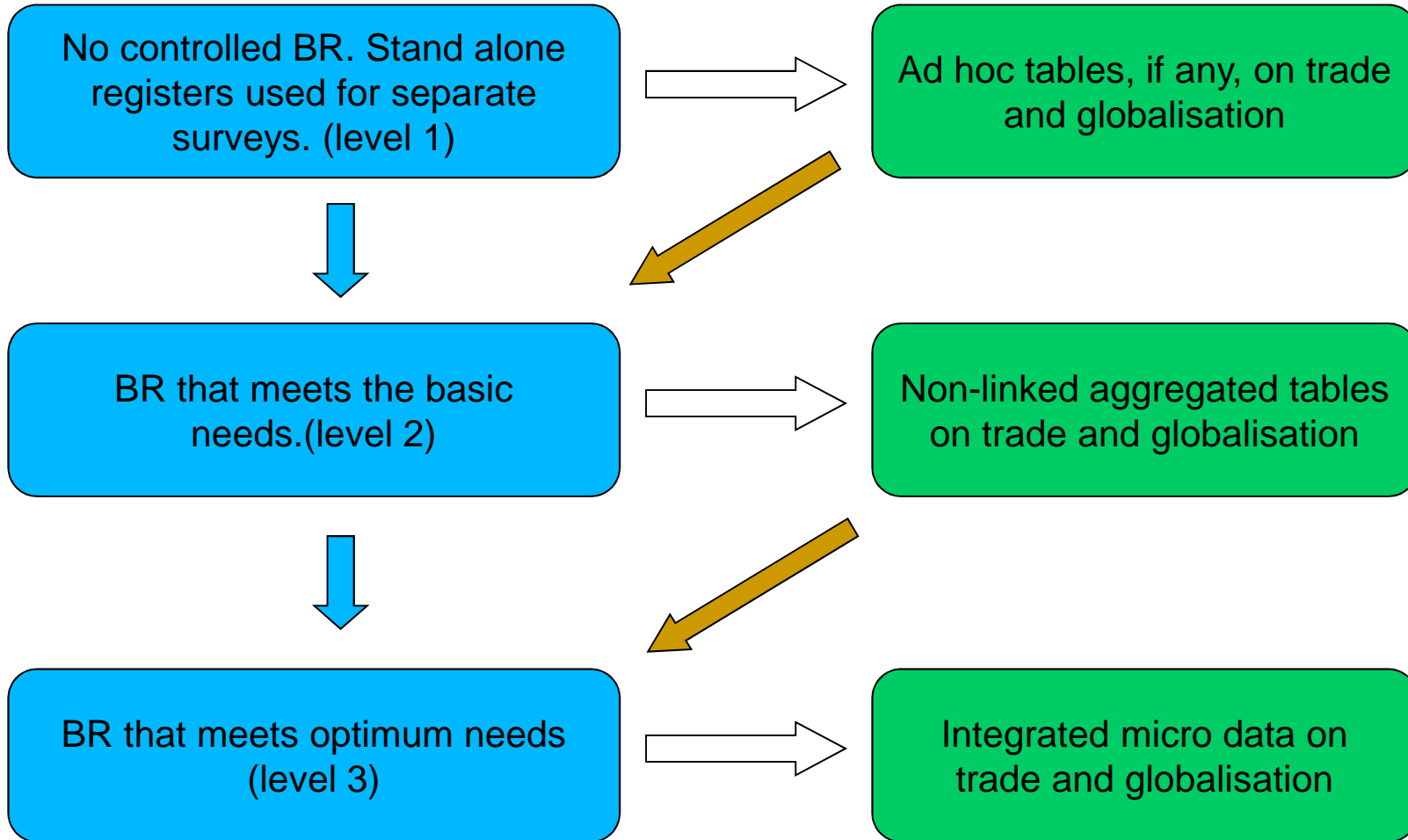
DESA

---

# Content

- Developing a Business Register
  - Linking registers
  - Base registers
  - System of base registers in the Netherlands
  - Entities in registers
  - Research on business dynamics
  - International orientation
  - Micro Data Linking
  - Output
-

# Developing a Business Register (BR)

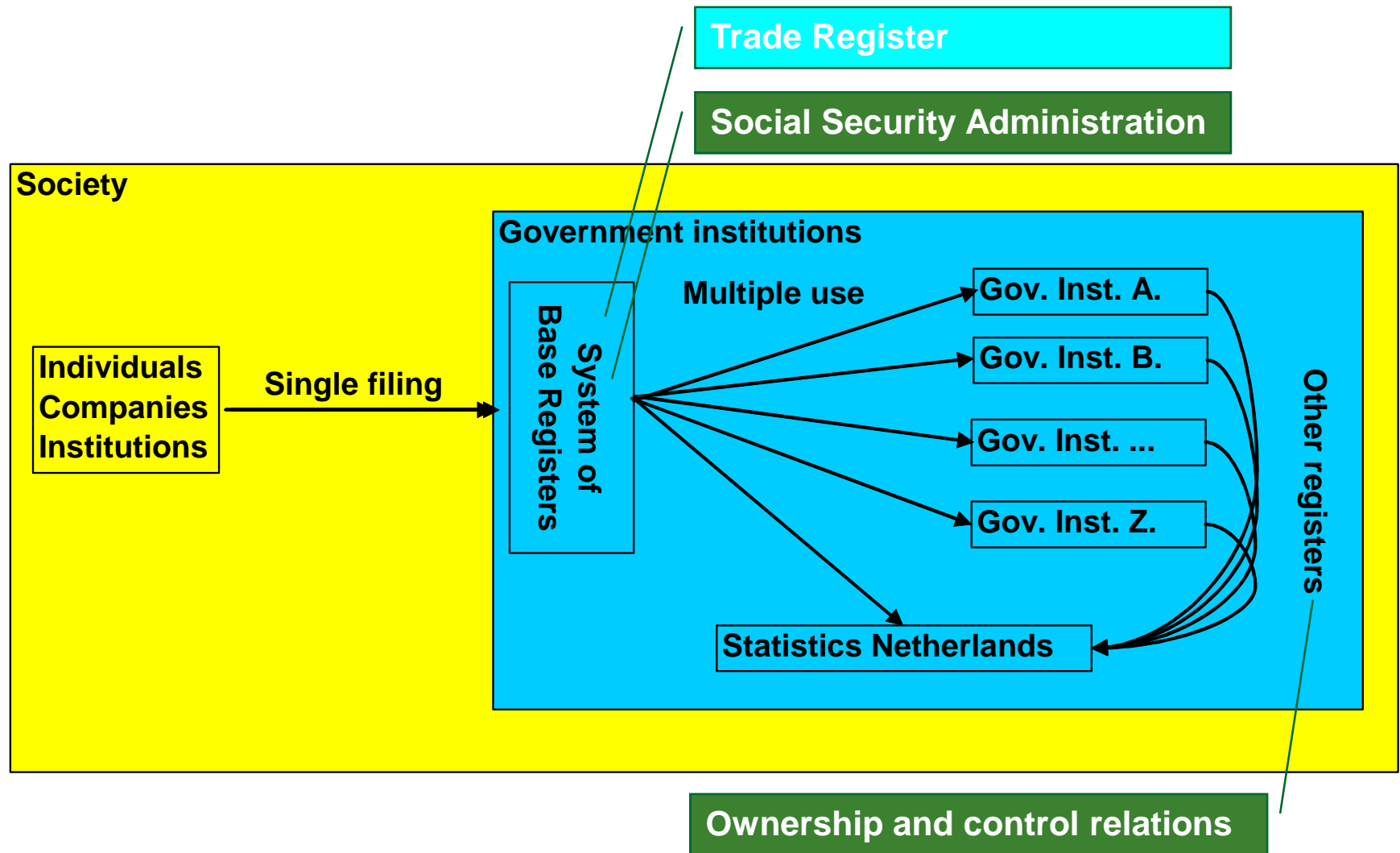


---

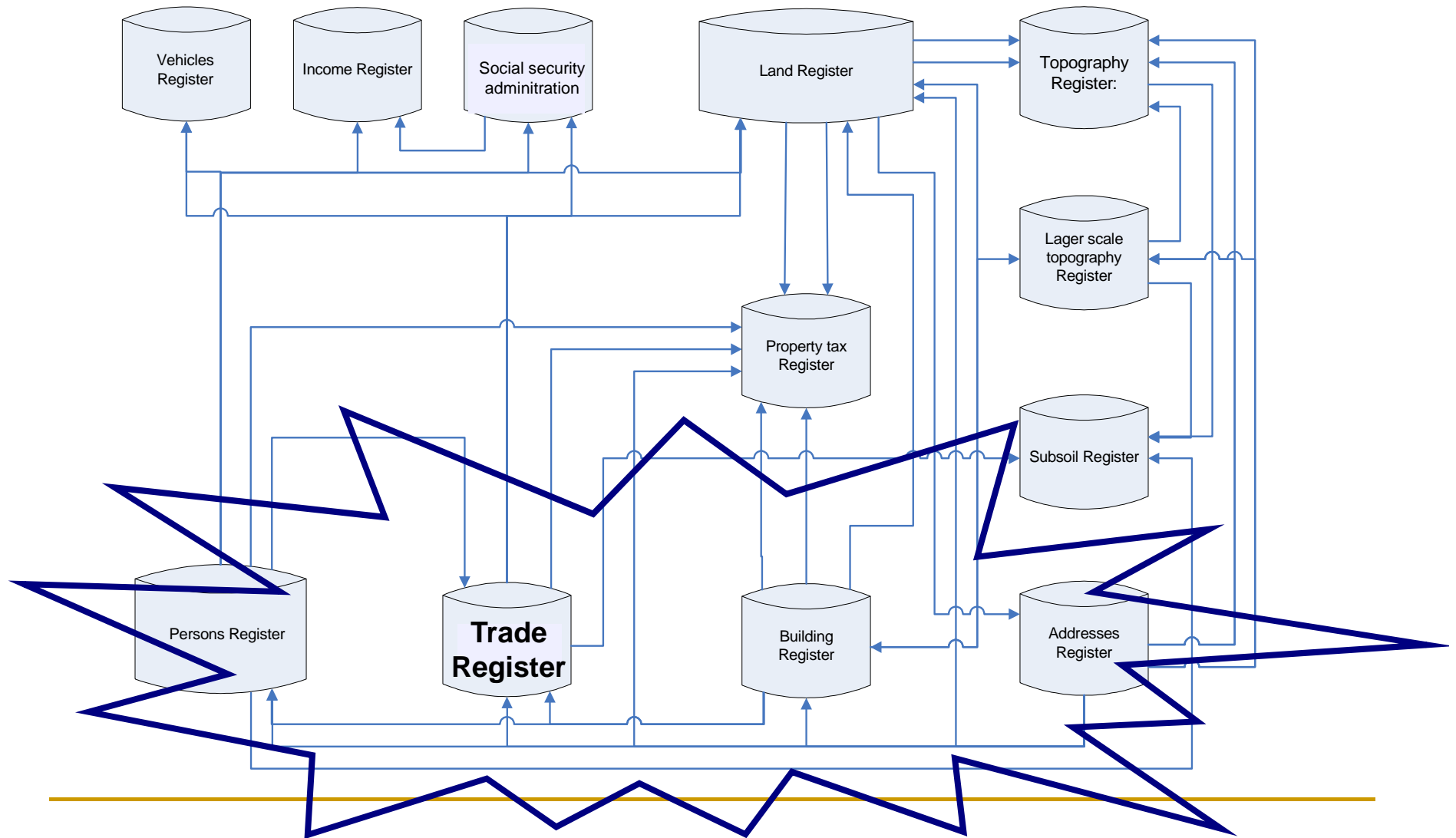
## Linking registers

- Government alignment in ID numbers
  - The system of base registers and other registers (e.g. tax register).
  - Example: trade register: Links with other base registers are incorporated in the trade register
-

# Base registers



# System of base registers (The Netherlands)



# Entities in Trade Register and relations to other registers

Person  
Natural Person  
or Non-Natural  
Person

Company

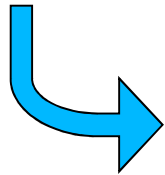
Establishment



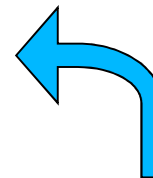
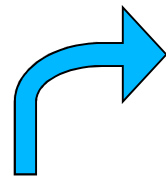
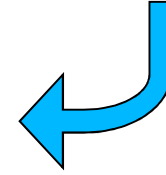
---

# Entities in Trade Register and relations to other registers

Persons Register



Tax Register



Building and Adresses Register

---



---

## Research on business dynamics

- **Starting point:** ongoing changes and (international) dynamics of business population impacts outcomes for individuals and society (income, productivity)
  - **Challenge:** integrate all information and describe determinants, effects and trends of economic globalisation of the national economy
  - **The answer:** linking microdata on enterprises to 1) describe/analyze the international orientation structure of globalisation and 2) analyze impacts on employment and welfare
-

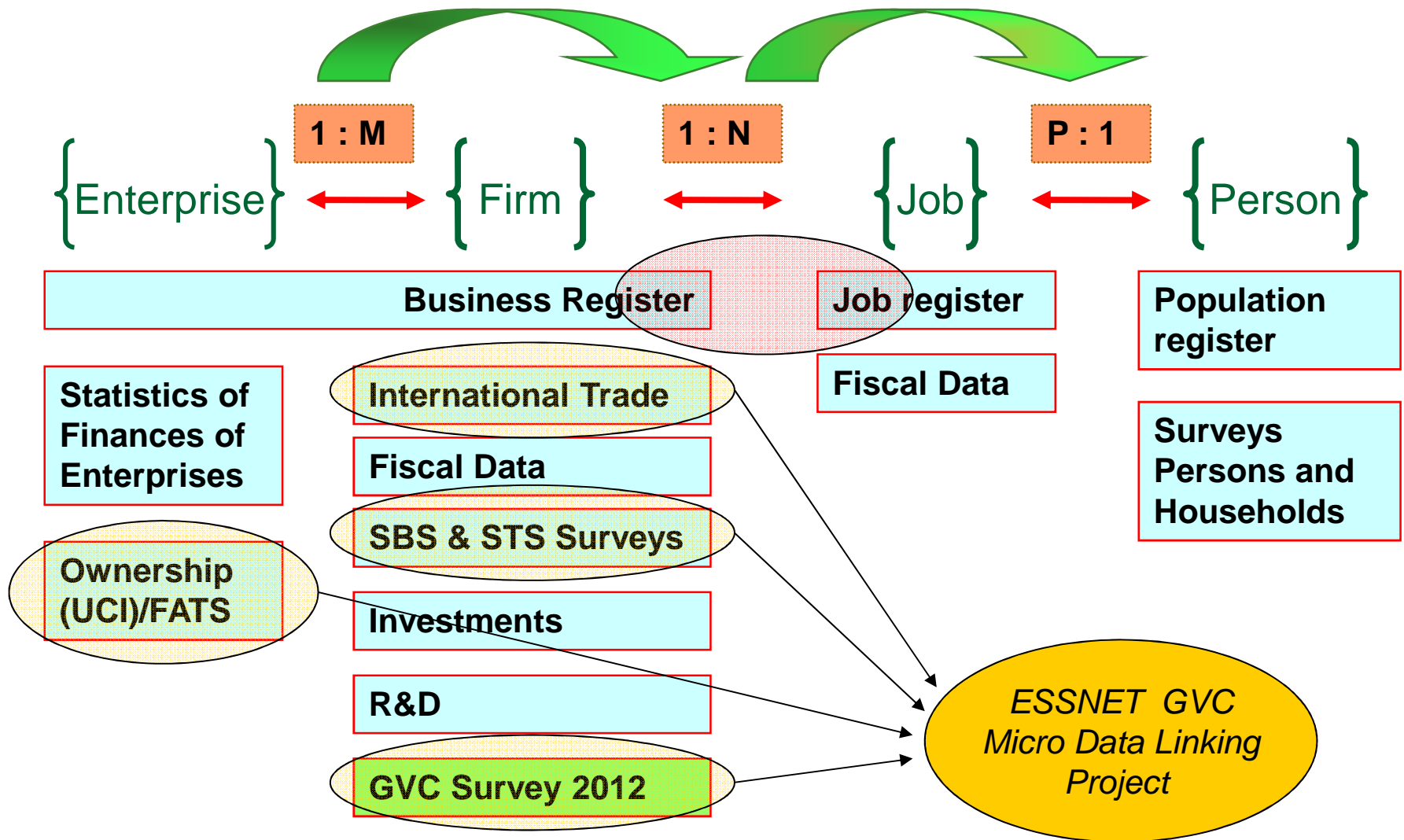


---

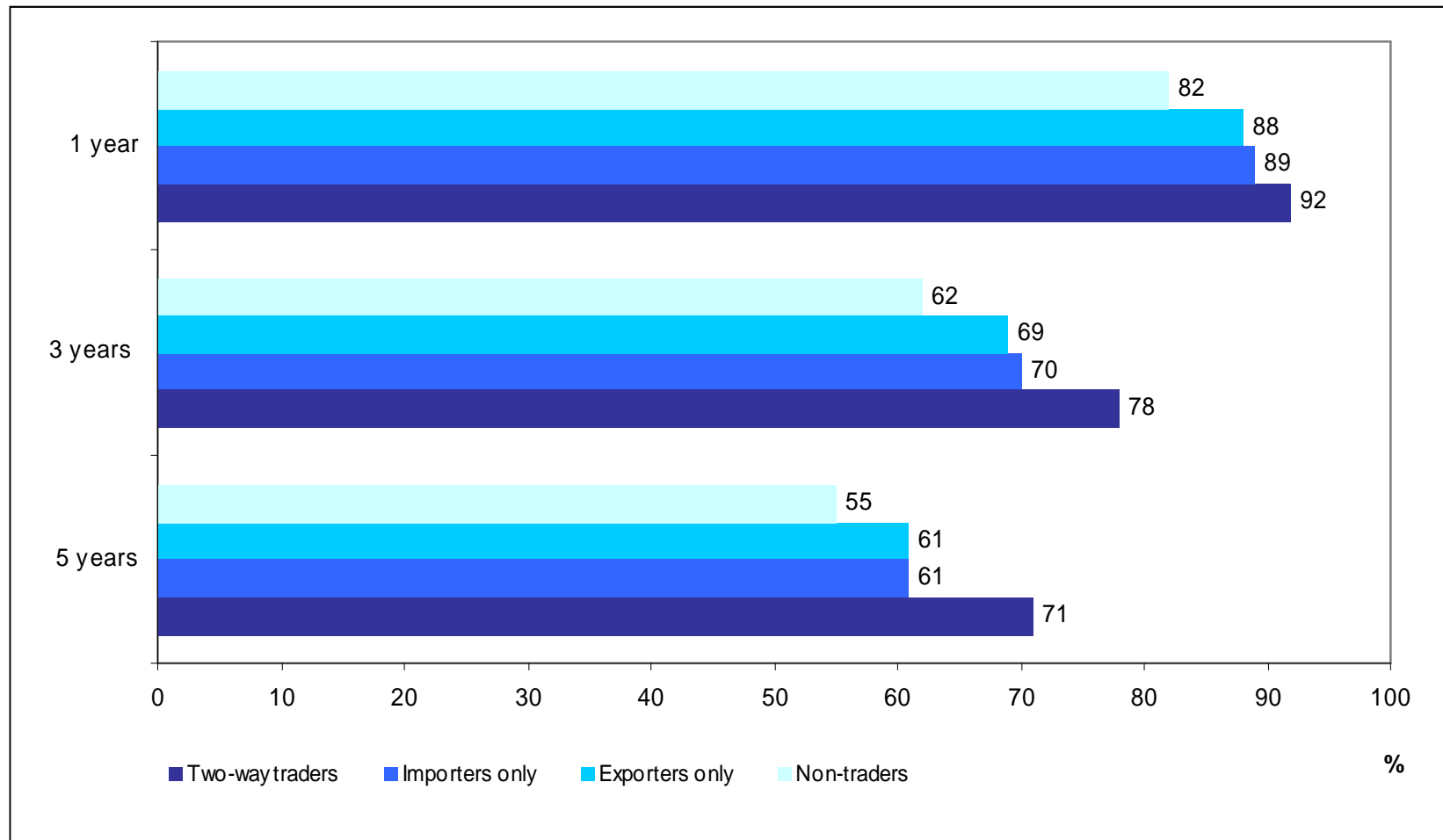
## Why Micro Data Linking?

- It creates new knowledge without increasing respondent burden
  - It adds value to already collected data by integrating the different registers
  - It enables to fine tune surveys by focusing on collecting information which is not available from existing statistical registers, e.g. the GVC survey in Europe
  - *Challenges:* selectivity of samples and registers, conceptual issues (enterprise and enterprise group, other concepts)
-

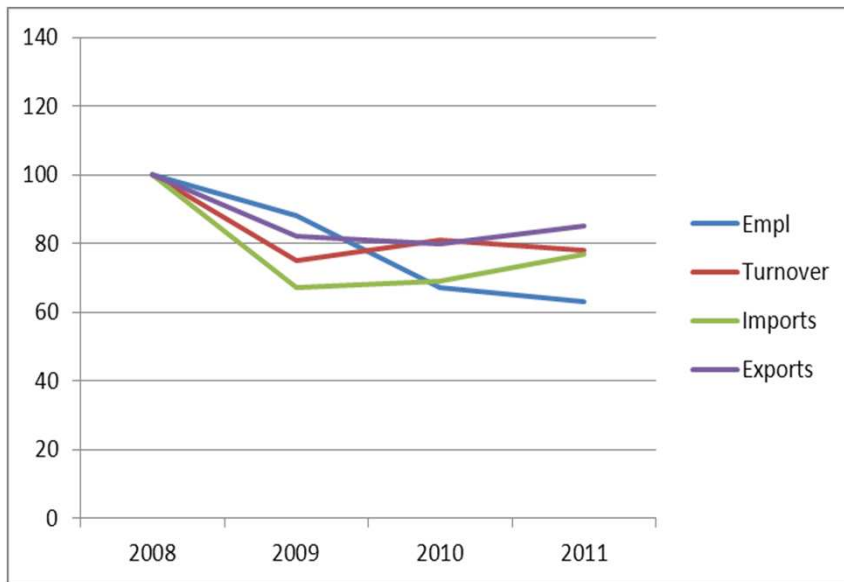
# Micro data linking



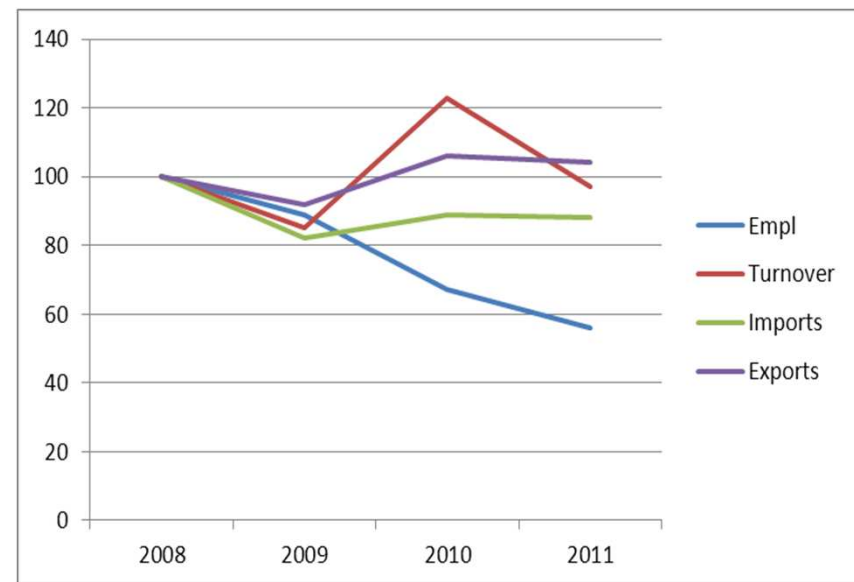
## Survival rates new start-ups by trader type in the Netherlands (cohort 2007)



# Effects on economy, starters in the Netherlands 2007



Dutch starters



Foreign controlled starters

# Turnover by type of trade in the Netherlands



*Business economy, Nace 10-74*